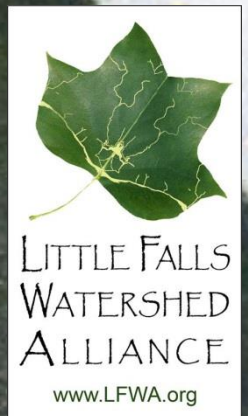


An aerial photograph of a stream flowing through a concrete-lined channel. A large, bare tree branch lies across the water, partially blocking it. The water is dark and reflects the surrounding greenery. The concrete banks are visible on either side, with some fallen leaves scattered on the surface.

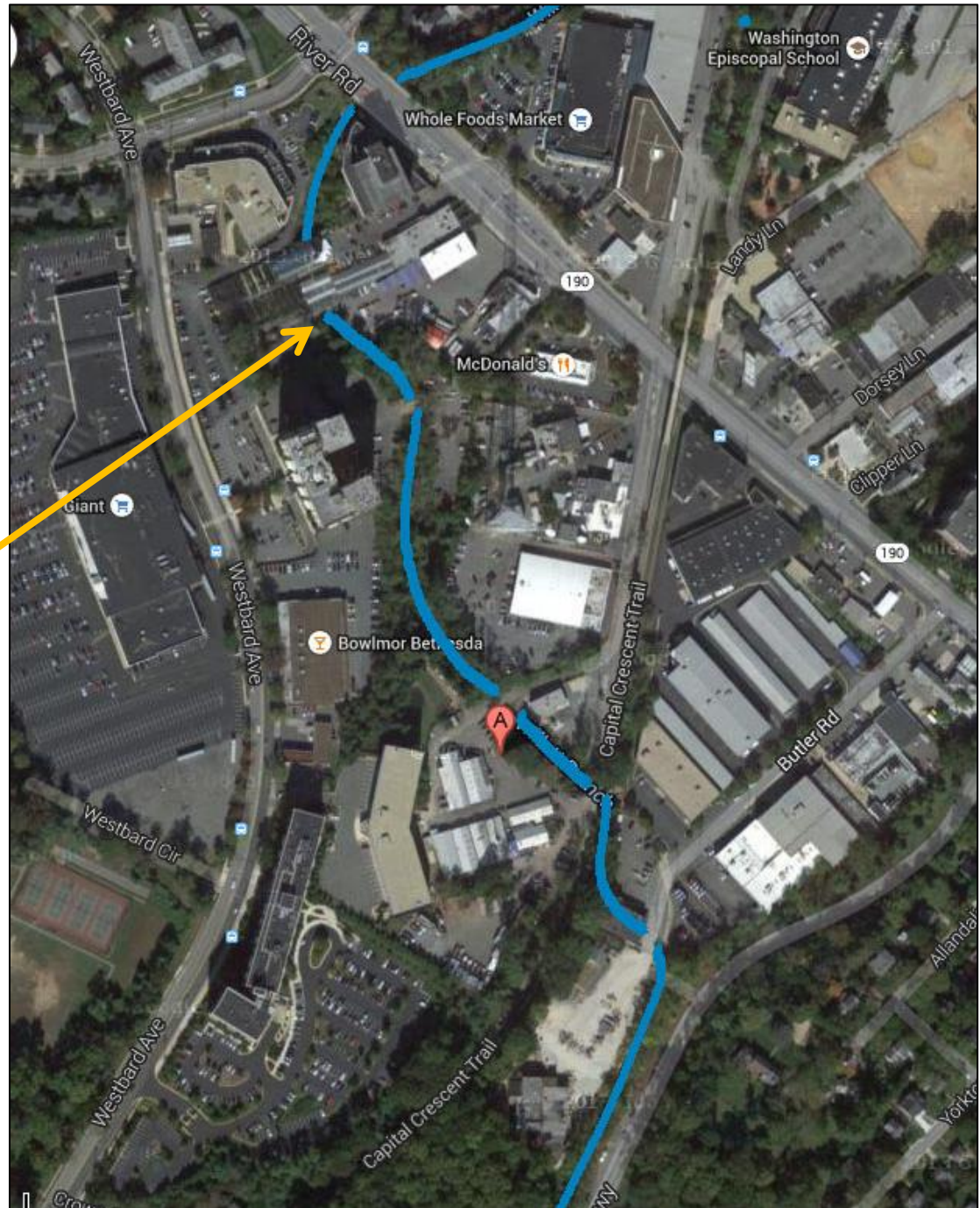
# **The Willett Branch in the Westbard Sector**

**Prepared by  
Little Falls Watershed Alliance  
October 9, 2014**



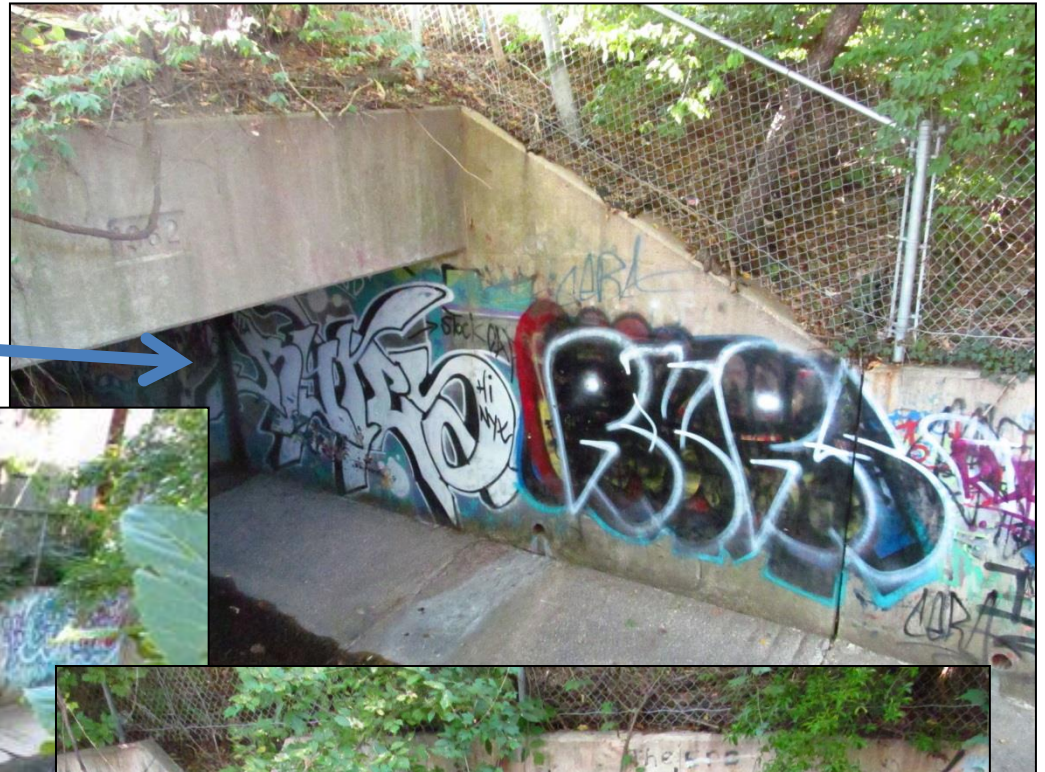
# Willett Branch in the Westbard Sector

Willett Branch is in blue. It comes from downtown Bethesda, goes under the Washington Episcopal School soccer field, through the Westbard Sector until it joins with the Little Falls Branch between River and Mass Ave on the Little Falls Parkway. The creek is concrete lined for most of its length.

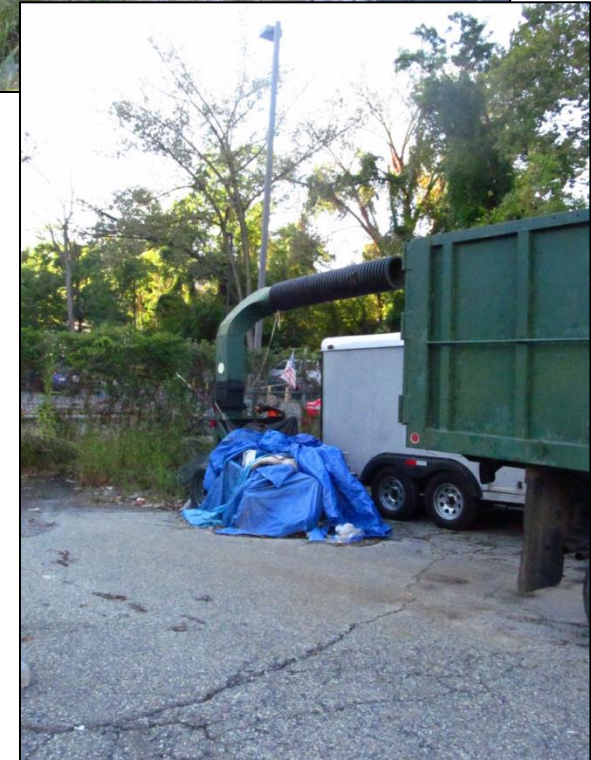
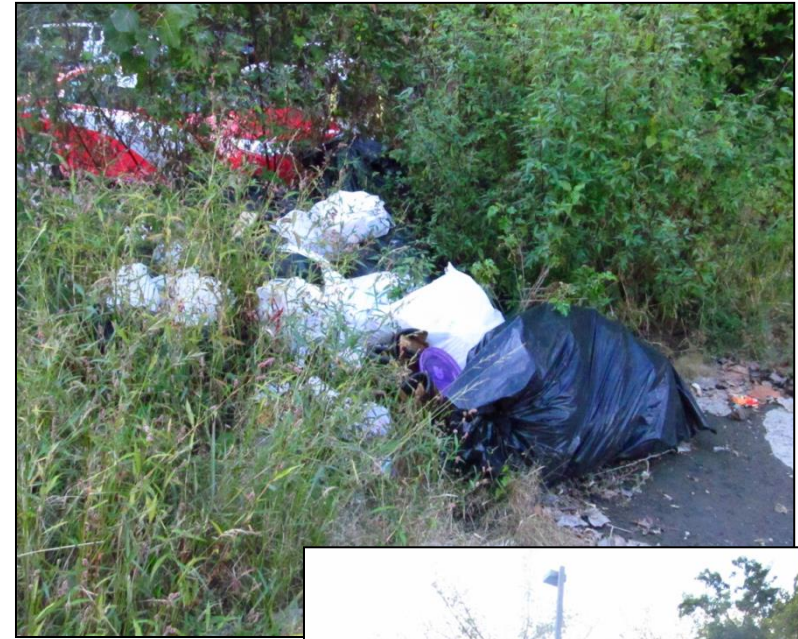


# Willett Branch at River Road (South of Whole Foods)

Tunnel under River Road



Storm Drain Inlet



## South Bank of the Willett Branch

Behind McDonald's,  
near the radio tower  
and cut through to  
the Westwood Towers  
Apartments





**View from Bridge to  
Westwood Towers Apartments**



Looking downstream at the  
Willett Branch from the bridge

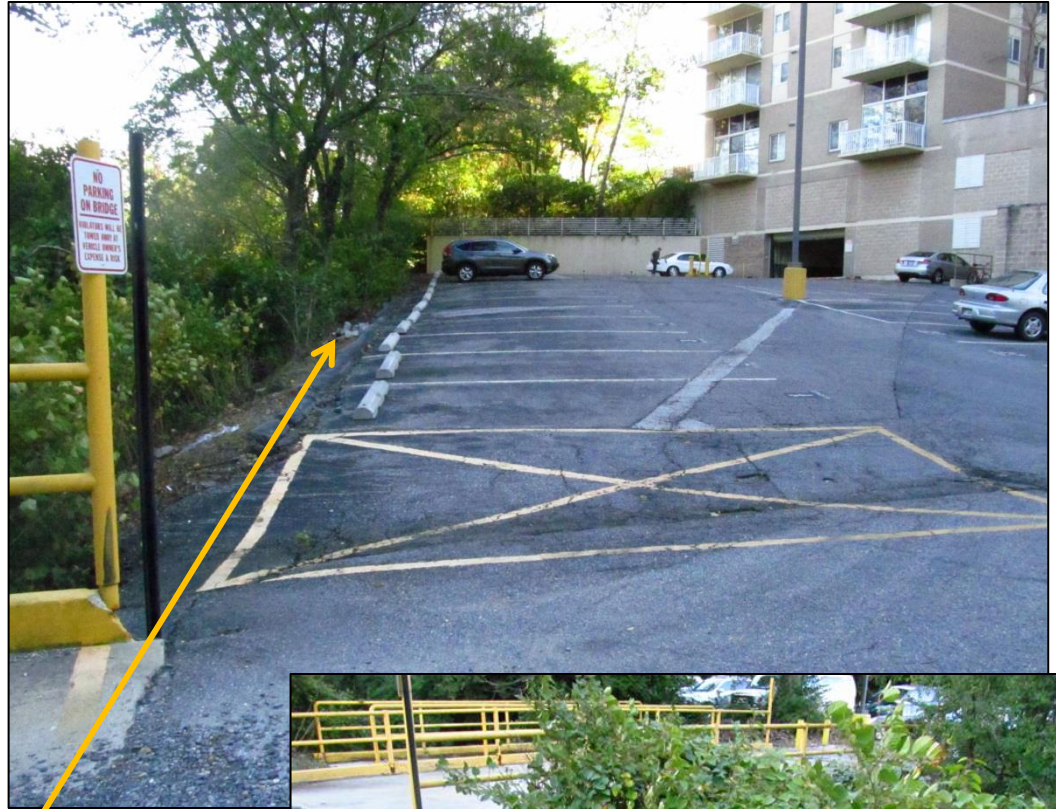


South Bank – Visitor parking lot for  
Towers Apartments.

# North Bank of Willett Parking Lot for Towers Apartments



Broken Sewer Access



Lots of trash!



Edge of parking lot eroding and falling into creek.

**On the North Bank  
Adjacent to the Towers  
Parking Lot**

Possible illegal discharge.  
Definitely eroded bank



Lots of shopping  
carts!

## Native Cattails and Grasses Trying to Take Back the Flood Plain!



Unnamed Alley Behind McDonald's